

(v) *Sheep breeding*: During 1949, 19 ewes and 2 rams of the Mandya breed sheep (woolly type) were got from Hosur. They are thriving well here and are multiplying; their strength is 2 rams, 15 ewes, and 24 lambs. One shearing was taken during 1949, and a total quantity of 25 lb. of wool was received. It is proposed to build up the stock to about 50 or 70 adults, and distribute them to the local hillmen.

(vi) *Cattle improvement*: A Murrah buffalo breeding bull was maintained on the farm for free service and grading the local scrub cattle.

Miscellaneous trials: (a) *Pyrethrum*: Pyrethrum which was tried here was not found to grow satisfactorily and its flowering was also poor.

(b) *Cinchona*: Cinchona is being tried at two places (Ananthagiri and Sunkarametta) in two acres at each place. The seedlings were planted in 1946—'47 and they have now come to flowering. But their growth is however not encouraging.

(c) Eucalyptus, Camphor, and Silver Oak plants are being grown as avenue plants in the colony.

<https://doi.org/10.29321/MAJ.10.A04513>

Fasciated Pedicels in a Variety of *Capsicum annuum*. L.

By

J. SAKHARAM RAO, B. sc.

(Botany Section, Agricultural Research Institute, Coimbatore)

The genus *Capsicum* comprises a wide range of forms varying in shape and pungency. Different degrees of importance have been attached to the morphological characters for taxonomical classification. The Index Kewensis recognises fiftyfour species, Roxburgh (1832) mentions six species, but modern systematists consider that there are only a few real species in the genus. Hooker (1885) recognises three species, namely *Capsicum minimum*, Roxb., *C. grossum*, Willd., and *C. frutescens*, L., and Irish (1898) has made it into two species namely *C. annuum*, L.; and *C. frutescens*, L. Shaw and Rahman (1928) agree with Irish and maintain the two species in their monograph. Bailey (1923) and Erwin (1931) have further reduced it to a solitary species, namely *C. frutescens*, L. The shape of the fruit and the nature of the calyx are reliable characters but the

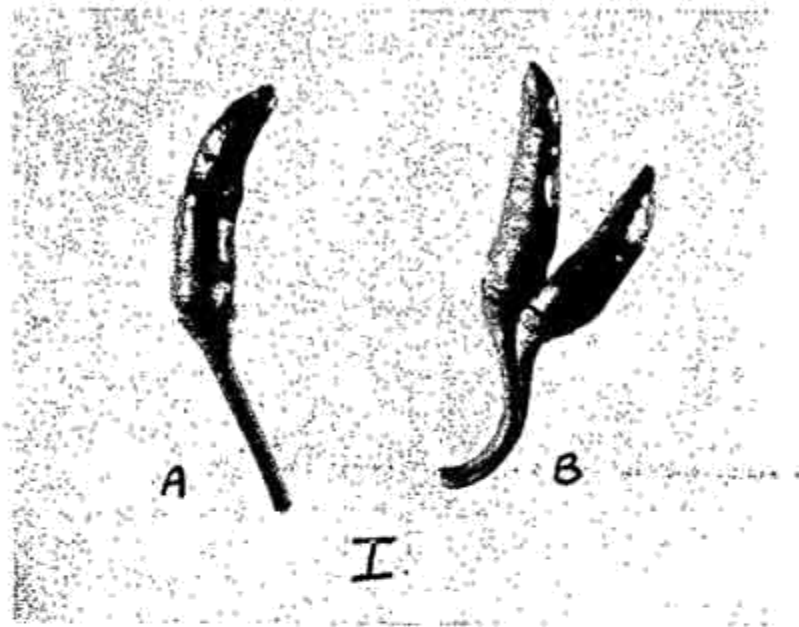
pendent or erect nature of the fruit seems to occur in both the species *C. annuum*, L., and *C. frutescens*, L. Shaw and Rahman (1928) have taken into consideration the number of pedicels in the axils as the main differentiating character in their classification and observe that plants with solitary pedicels are *C. annuum*, L., and those with more than one as *C. frutescens*, L.

In a variety of *C. annuum*, L., (var. *acuminata erecta*, described by Shaw and Rahman) two fruits with fasciated pedicels were noticed (fig. I. B.) wherein the fruits were completely free and the pedicels alone were joined. There were ten calyx lobes and in the transverse sections of the fruits both were bicarpellary, (fig. II. B.) thus confirming that the fruits had developed from two separate flowers. Transverse section of the fasciated pedicels revealed two distinct vascular rings. Normal fruits are medium in length, 4 to 6 cm., circular in cross section, erect, dark green with much purple colour and becoming red when mature.

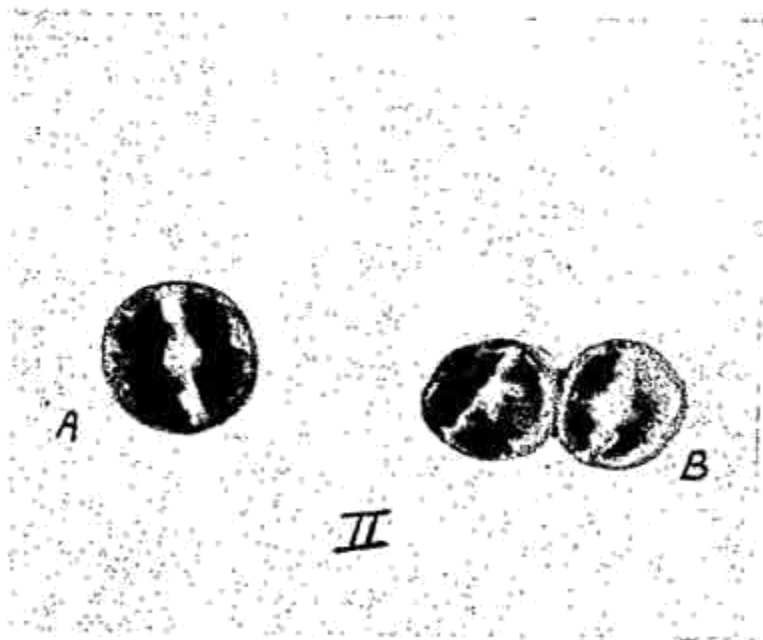
This phenomenon slightly disturbs the classification of Shaw and Rahman (1928) and suggests a possibility for the occurrence of more than one flower in the axils of *C. annuum*, L. also as in the case *C. frutescens*, L. The interesting abnormality seems to support the classification of Bailey (1923) and Erwin (1931) who advocated a single species namely *C. frutescens*, L. However, it appears that the number of flowers in the axils cannot be taken as a satisfactory differentiating character in identifying *C. annuum*, L. from *C. frutescens*, L.

REFERENCES

1. Roxburgh. W. (1832) *Flora indica*, P. 573, Allen & Co., London.
2. Hooker. J. D. (1885) *Flora of British India*, Vol. IV. p. 238—239, Reeve & Co., London.
3. Irish. H. C. (1898) A revision of the genus *Capsicum*, Missouri Bot. Gar. Annual Report, 9.
4. Shaw. F. J. F. and Rahman. S. A. (1928) *Memoirs of the Department of Agriculture*, Vol. 16, p. 59—82.
5. Bailey L. H. (1923) *Gentes Herbarium*, Vol. I. p. 128—129.
6. Erwin. A. T. (1931) Anthesis and pollination in *Capsicum*, *Proceedings of the American Society for Horticultural Science*, Vol. 27. p. 309—310.



A. Normal and B. Fasciated.



Transverse Secions of A. Normal and B. Fasciated Fruits.



Fig. 1

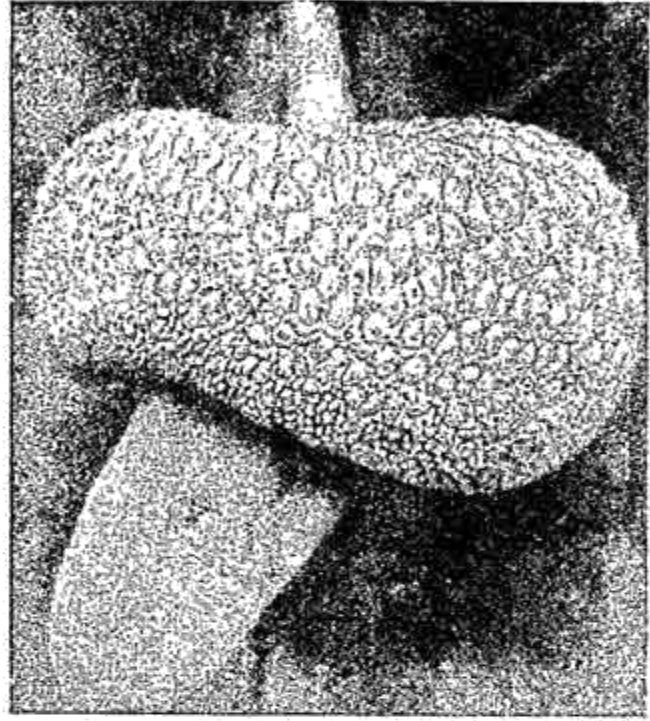


Fig. 2



Fig. 3

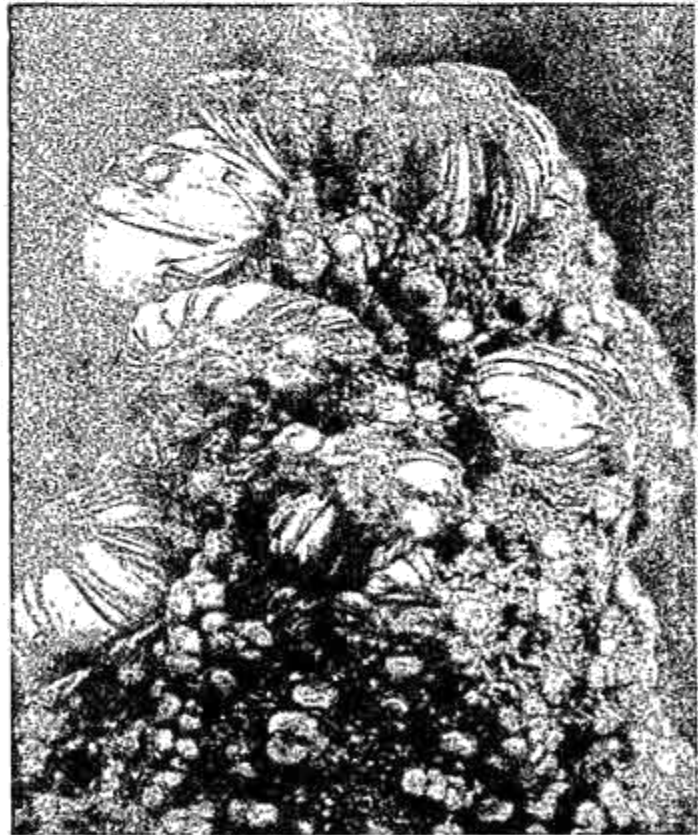


Fig. 4